

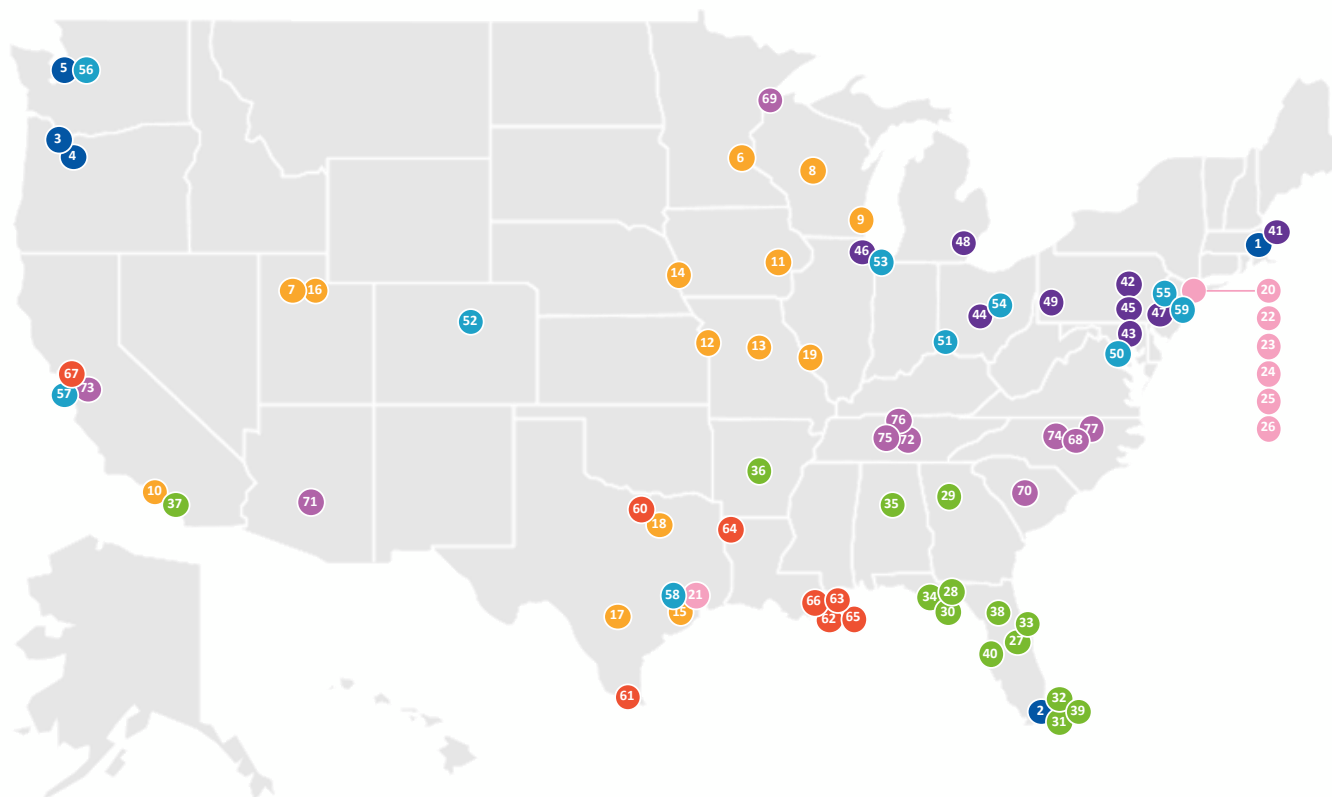
# PCORnet Engagement Core - Phase 3 and Phase 4 Structure



# Items

- PCORnet® Overview
- PCORnet® Phase 3 Structure Overview
  - Engagement Core Overview
  - EC Workstreams
- PCORnet® Phase 4 Structure Overview

# PCORnet® Clinical Research Network Locations



## ADVANCE

1. Fenway Health
2. Health Choice Network
3. OCHIN
4. Oregon Health & Science University Hospital System
5. The University of Washington

## GPC

6. Allina Health
7. Intermountain Healthcare
8. Marshfield Clinic Research Institute
9. Medical College of Wisconsin
10. University of California, Los Angeles
11. University of Iowa Healthcare
12. University of Kansas Hospital
13. University of Missouri
14. University of Nebraska Medical Center
15. University of Texas Health Science Center at Houston
16. University of Utah Health
17. UTHealth San Antonio
18. UT Southwestern Medical Center
19. Washington University in St. Louis

## INSIGHT

20. Columbia
21. Houston Methodist
22. Montefiore
23. Mount Sinai
24. New York University Langone Health
25. New York-Presbyterian
26. Weill Cornell Medicine

## OneFlorida+

27. AdventHealth Orlando
28. Bond Community Health Center, Inc.
29. Emory University
30. Florida Medicaid
31. Jackson Health System
32. Nicklaus Children's Hospital (NCH)
33. Orlando Health
34. Tallahassee Memorial Healthcare and Capital Health Plan
35. University of Alabama at Birmingham
36. University of Arkansas for Medical Sciences
37. University of California, Irvine
38. University of Florida and University of Florida Health
39. University of Miami and UHealth
40. University of South Florida and Tampa General Hospital

## PaTH

41. Boston Medical Center
42. Geisinger Health
43. Johns Hopkins University
44. Ohio State University
45. Penn State University
46. Rush University Medical Center
47. Temple University
48. University of Michigan
49. University of Pittsburgh

## PEDSnet

50. Children's National Hospital
51. Cincinnati Children's Hospital
52. Colorado Children's Hospital
53. Lurie Children's Hospital
54. Nationwide Children's Hospital
55. Nemours
56. Seattle Children's Research Institute
57. Stanford Children's Health
58. Texas Children's Hospital
59. The Children's Hospital of Philadelphia (CHOP)

## REACHnet

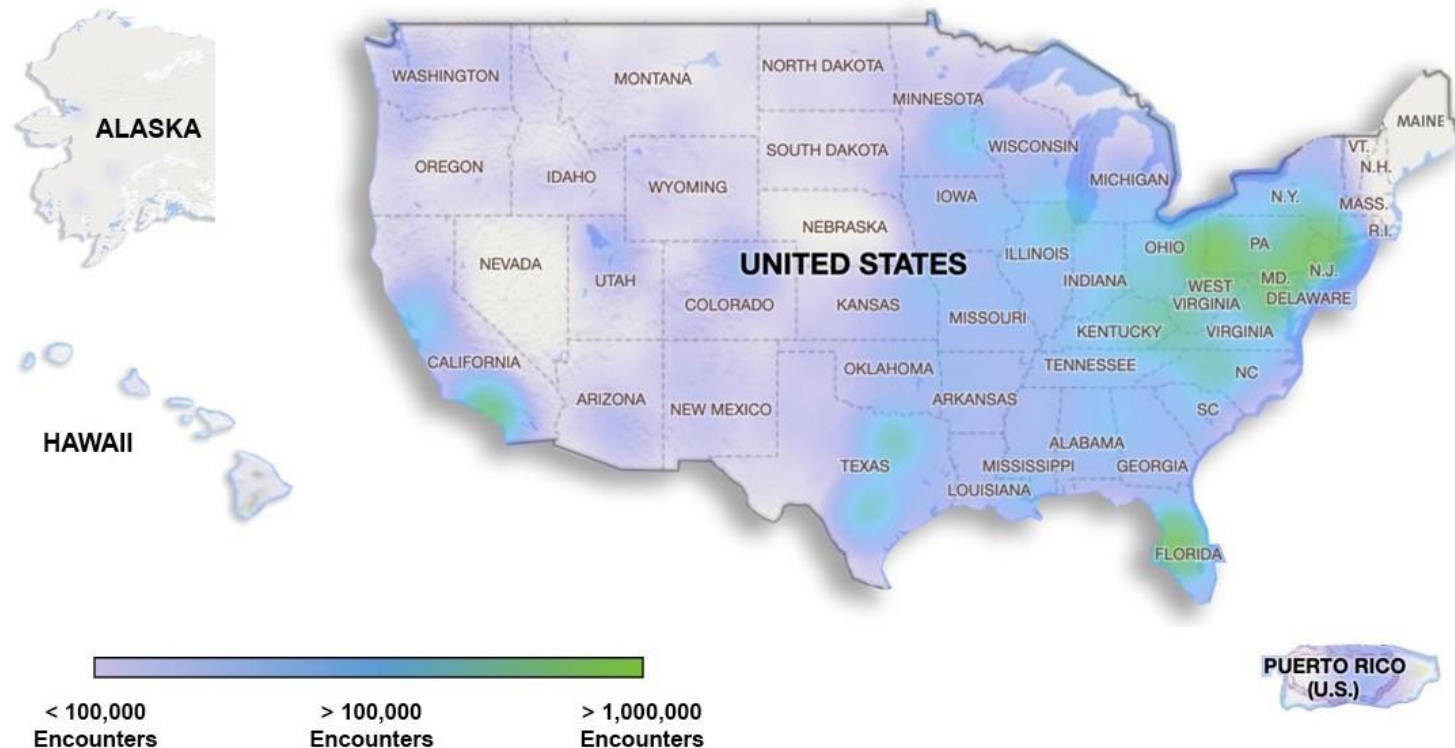
60. Baylor Scott & White Health (BSWH)
61. DHR Health Institute for Research and Development
62. Louisiana Public Health Institute (Lead)
63. Ochsner Health
64. Ochsner LSU Health Shreveport
65. Tulane Medical Center
66. University Medical Center New Orleans
67. University of California, San Francisco

## STAR

68. Duke University (CC)
69. Essentia Health
70. Health Sciences South Carolina
71. Mayo Clinic
72. Meharry Medical College
73. Stanford Healthcare
74. University of North Carolina at Chapel Hill
75. Vanderbilt Health Affiliated Network
76. Vanderbilt University Medical Center (CC)
77. Wake Forest University Health Sciences

## Scope of PCORnet-accessible data

PCORnet represents data from **everyday health care encounters with more than 30 million people** across the U.S. each year.



PCORnet  
3.0

PCORI

PCORNet = CRNs

PCORnet Steering  
Committee

Executive  
Management Team

Standing Committees  
(Research,  
Engagement, Data)

Coordinating Center

PMO

Common Data Model

Engagement <sup>NEW</sup>

Communication

Query Fulfillment

Engagement Core  
Leadership Team

Governance

Policy

Front Door

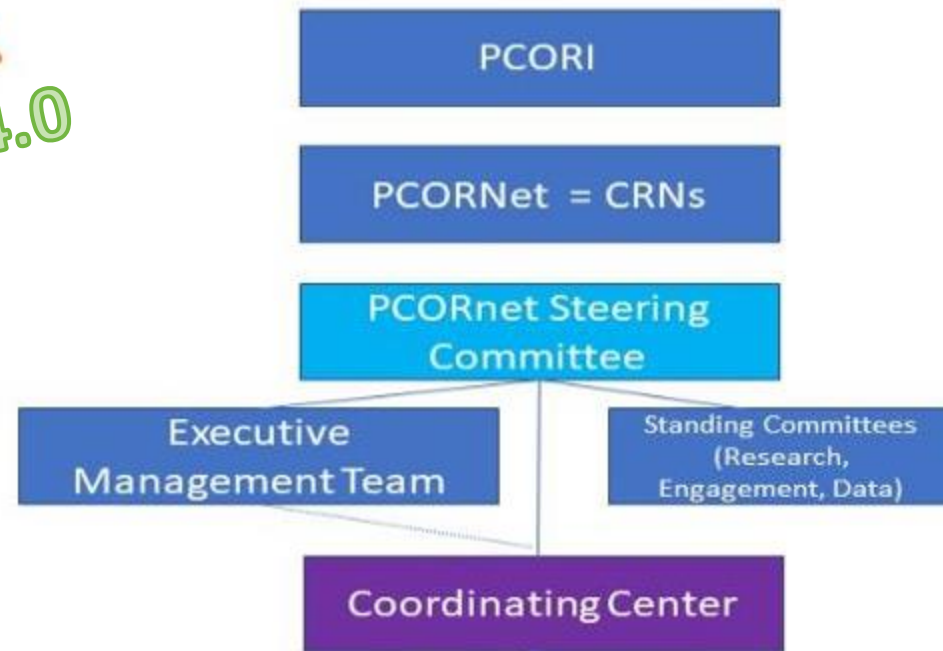
Tools, Education &  
Training

Evaluation & Metrics

### Legend

Acronym	Meaning
PCORI	Patient-Centered Outcomes Research Institute
PCORnet	The National Patient-Centered Clinical Research Network
CRN	Clinical Research Network
PMO	Project Management Office

PCORnet  
~~3.0~~ 4.0



#### Legend

Acronym	Meaning
PCORI	Patient-Centered Outcomes Research Institute
PCORnet	The National Patient-Centered Clinical Research Network
CRN	Clinical Research Network
PMO	Project Management Office

#### Governance & Research Readiness (DCRI)

- Governance
- Coordination
- Operations

#### Data (DCRI + CHOP)

- Common Data Model
- Query Fulfillment
- Analytic tool Development
- Privacy and data security

#### Engagement & Public Awareness (VUMC + DCRI)

- Engage partners and investigators
- Maintain & develop infrastructure supporting engagement across PCORnet
- Increase public awareness of PCORnet

# What's different?

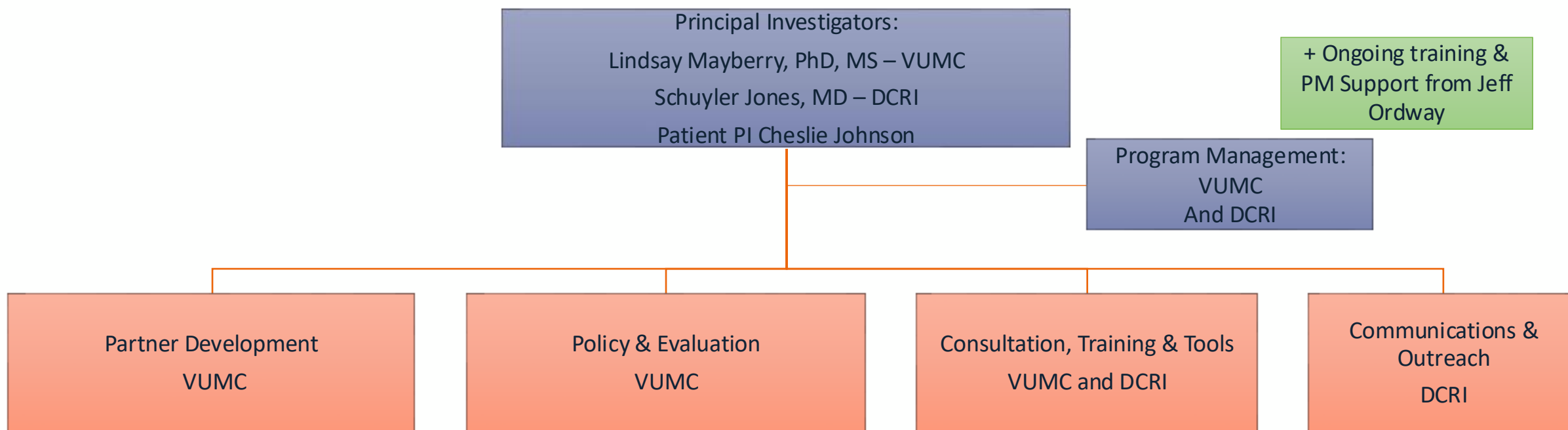
- Emphasis on a single unified Coordinating Center → Integrated Program Management Office (PMO)
- Merging of previously separate groups
- Focus on sustainment and deepening of infrastructure already developed – filling gaps, integrating, increasing accessibility
- Coordinating Center Services focus on increasing the number of high-quality PCORnet Studies
- For Engagement & Public Awareness:
  - Streamlined teams & Project Management
  - Development of Common Engagement Model
  - Facilitate exchange of engagement tools, resources, learnings and best practices via PCORnet newsletter, webinars, website
  - Create, implement, and disseminate engagement tools and training
  - Manage and contribute to the PCORnet Resource Repository

# Phase 4 – Coordinating Center Efforts

- Collaboratively contribute to PCORnet Playbook
- Host CRN Operations Meetings for CRN Engagement Leads, Patient PIs, Program Managers and Research Readiness Leads
- Support PCORI in developing and hosting a PCORnet Annual Meeting
- Collaboratively develop a PCORnet Roadshow presentation for CRNs and national/international scientific meetings



# Phase 4 – Engagement and Public Awareness Services



+ Ongoing training & PM Support from Jeff Ordway

Each team has a PI and/or a PM + at least 1 patient partner;  
Continuity from PCORnet Phase 3 with few additions  
(Lyndsay Nelson & Schuyler Jones)

# Engagement & Public Awareness Services

- Partner Development
  - Onboarding and ongoing training of partners
  - Development of mentorship program for PCORnet patient partners
  - PCORnet Operations Meeting planning for CRN Engagement Leads & Patient PIs

# Engagement & Public Awareness Services

## ○ Policy & Evaluation

- Increase awareness/knowledge of policies related to engagement across PCORnet
- Revision and adoption of a new Compensation Policy for Partners
- Review/revise/develop additional policies as requested by PCORnet leadership
- Advise PCORI on the refinement and implementation of a multi-level engagement evaluation plan
- Assist with/advise on interpretation of findings from evaluation data
- Suggest plans/adapt existing CC plans to address gaps or needs identified during the engagement evaluation

# Engagement & Public Awareness Services

## ○ Consultation, Training & Tools

- Complete PCORnet Front Door consultations pertaining to engagement
- Develop unified approach to consults that leverages the Common Engagement Model (when established)
- Collaborate to ensure enhancements related to engagement are utilized as part of the consultative, NCR and PCORnet study designation processes
- Maintain up-to-date and comprehensive resources related to engagement in the PCORnet Knowledge Repository and referenced in the Playbook for PCORnet
- Collaborate across the Coordinating Center to develop of engagement-related aspects of the Coordinating Center Roadshow
- Develop a menu of engagement methods with associated budgetary guidance, reflecting the Common Engagement Model

# Engagement & Public Awareness Services

## ○ Communications & Outreach

- Develop and implement communications plan and editorial calendar
- Enhance and oversee PCORnet.org including maintaining knowledge repository, data queries, and PCORnet Playbook
- Produce regular social media content and quarterly newsletter and capture key digital metrics to inform ongoing improvement
- Create monthly content (news stories, 1-pagers, graphics, lay summaries) in close collaboration with PCORI
- Conduct paid advertising campaigns to expand awareness of PCORnet to key audiences
- Plan and lead annual summaries of accomplishments and an annual meeting highlighting research

# Discussion

- Questions & Comments are welcome!