

Update from PCORI

Claudia Grossmann, PhD and Julianna Paris, MPH

Research Infrastructure and Innovation

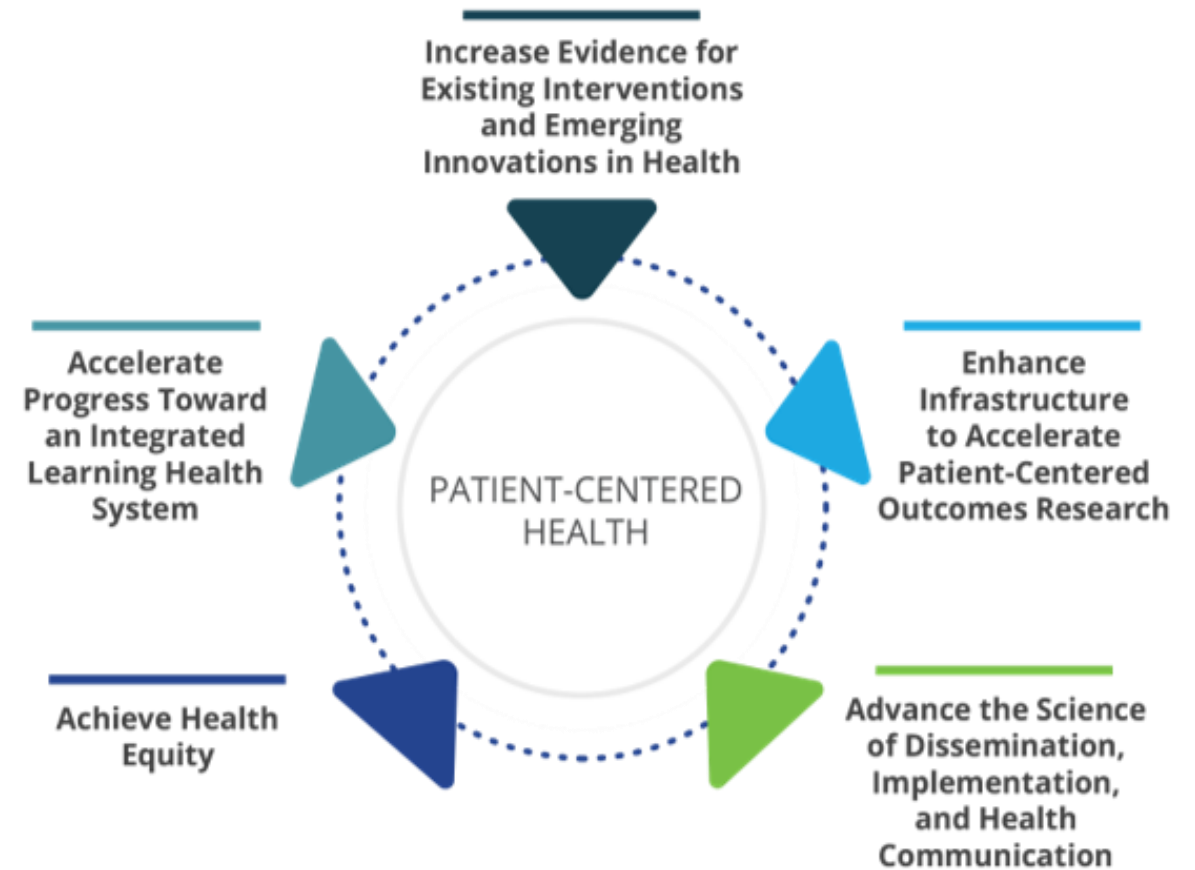
PCORI

August 2024



PCORI's Strategic Plan, National Priorities for Health

Holistic approach to generating and disseminating patient-centered Comparative Effectiveness Research



PCORI Topic Themes

12 themes that will inform focused funding opportunities



- Improving outcomes for people with intellectual and developmental disabilities
- Promoting health for older adults
- Promoting healthy children and youth

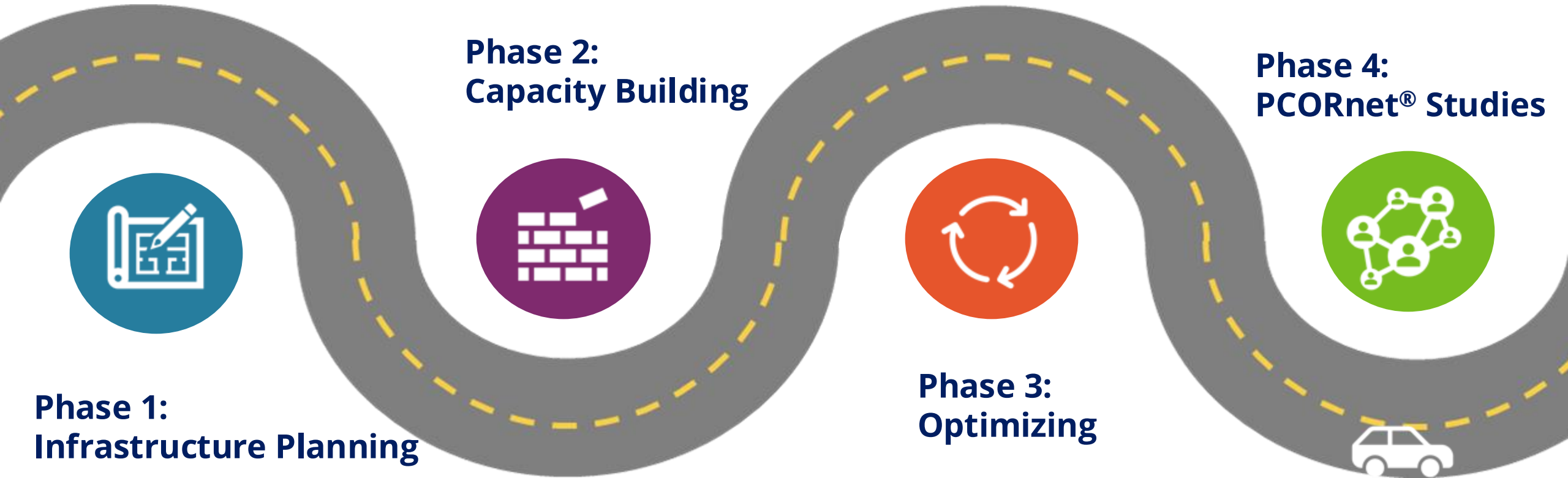


- Addressing substance use
- Addressing violence and trauma



- Addressing COVID-19
- Addressing rare diseases
- Improving cardiovascular health
- Improving mental and behavioral health
- Managing pain
- Preventing maternal morbidity and mortality
- Promoting sleep health

PCORnet® Phases 1-4



Strategies to Leverage PCORnet® to Advance PCORI's National Priorities for Health and Evaluate PCORnet Performance



- In 2021, the Board developed and approved the Prioritizing Principles for Infrastructure Funding Relating to PCORnet
- In 2022, building upon the Principles, the Board approved the Strategies to Leverage PCORnet to Advance PCORI's National Priorities for Health and Evaluate PCORnet Performance

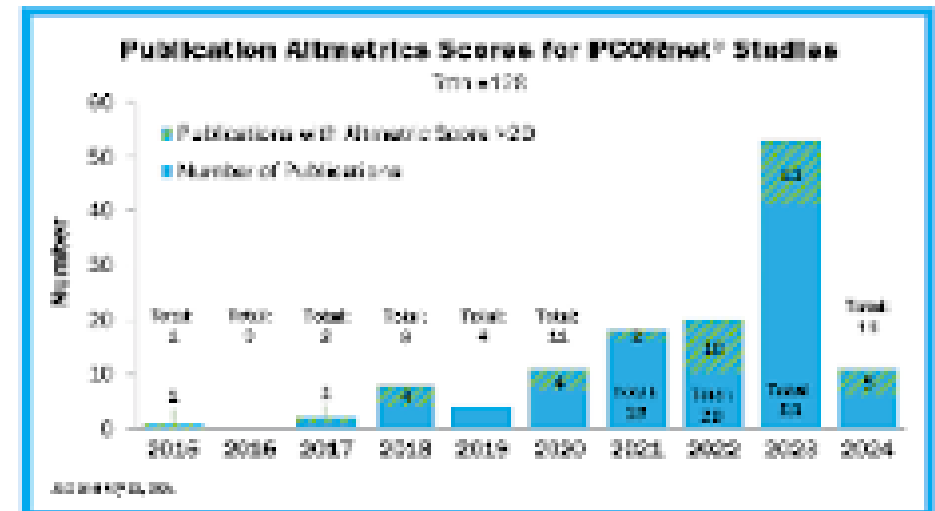
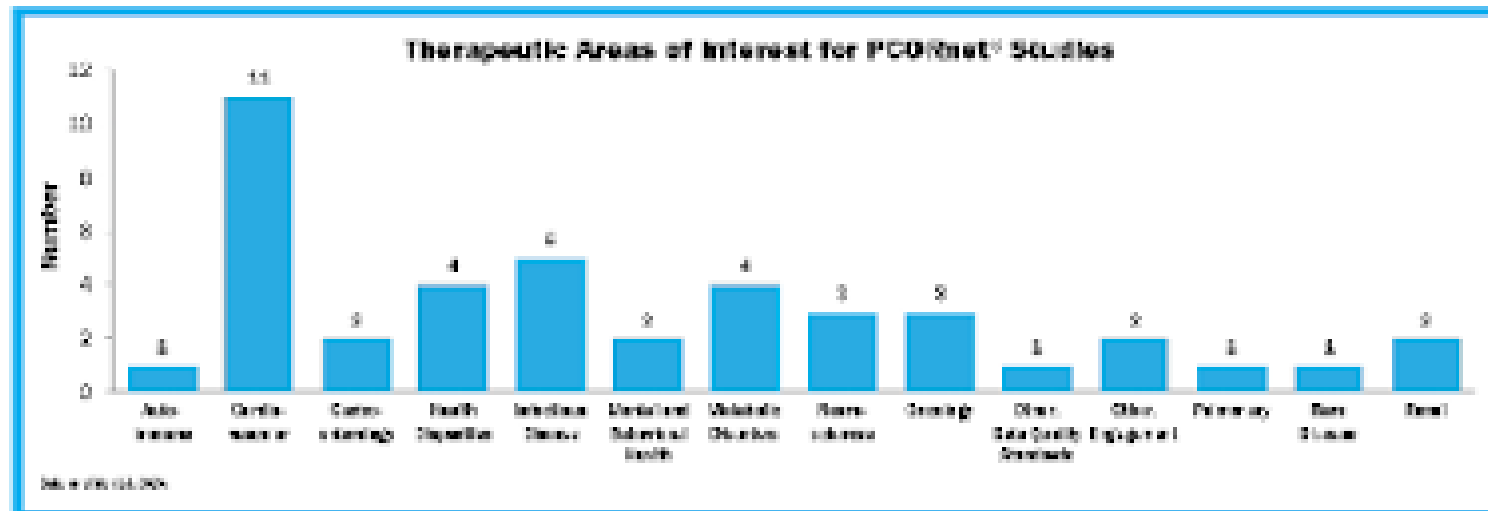
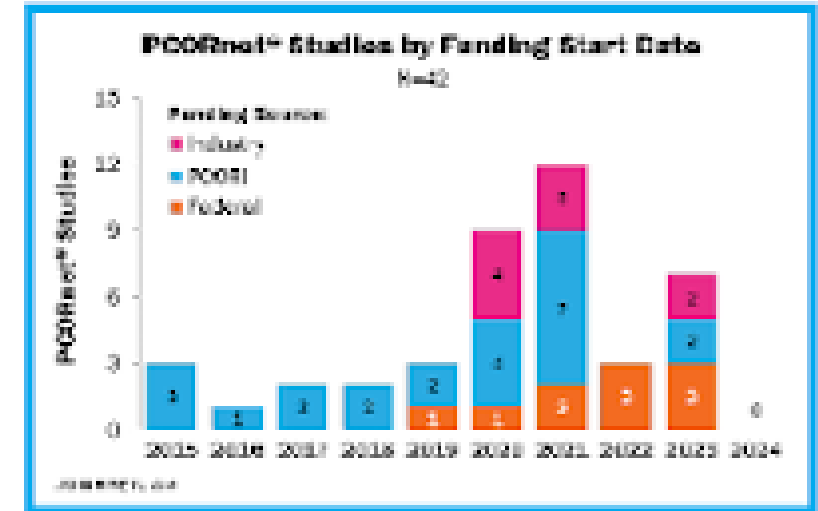
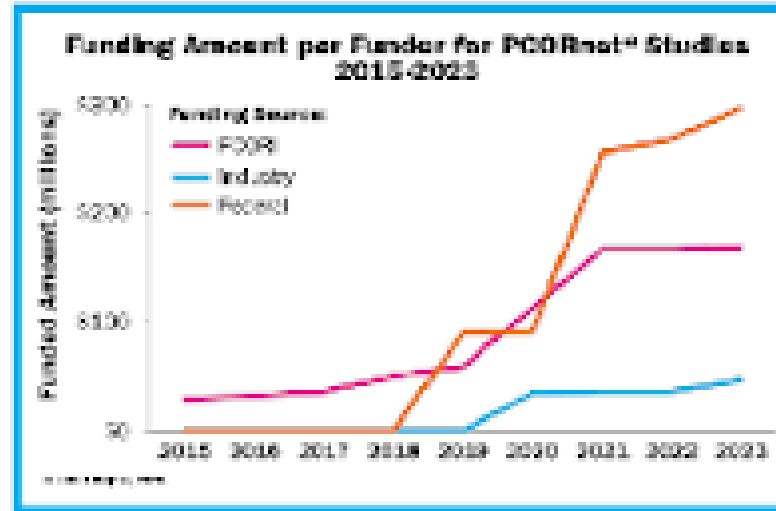
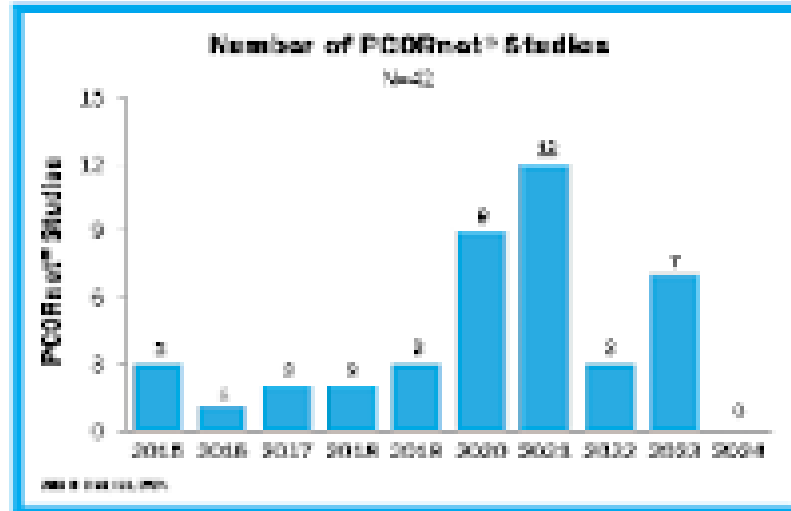


Priorities to Make Progress on Board Strategies



- **Research using PCORnet®:** Develop and execute PCORnet® Studies; define and implement research metrics that demonstrate the value of PCORnet
- **PCORnet Awareness and Use:** Increase awareness and use of PCORnet by diverse investigators; develop new partnerships to use PCORnet for range of research types
- **PCORnet Maintenance and Innovation:** Enhance availability of new data types (e.g., social determinants of health, patient reported outcomes) in the PCORnet® Common Data Model; increase diversity of populations and care settings
- **Use PCORnet for PCORI priorities:** Use PCORnet to inform PCORI's research agenda

PCORnet® Studies



PCORnet® Studies on the PCORnet Website



NETWORK RESEARCH STUDIES DATA ENGAGEMENT FRONT DOOR

Search all PCORnet® Studies below, filtering by **Status**, **Funder** or **Therapeutic Area**, or search by **keyword**.

[Reset](#)

<input type="text" value="Search..."/>	<input type="text" value="Status"/>	<input type="text" value="Funder"/>	<input type="text" value="Therapeutic Area"/>
--	-------------------------------------	-------------------------------------	---

[Behavioral Economic and Staffing Strategies to Increase Adoption of the ABCDEF Bundle in the ICU \(BEST-ICU\)](#)

Research Question(s): The overarching goal of this study is to support the "real world" assessment of strategies used to foster adoption of several highly efficacious evidence-based practices in he...

[REducing future fractureS and improving ouTcOmes of fRagility fracture \(RESTORE\)](#)

Research Question(s): RESTORE tests whether an Augmented-FLS service, where patients are contacted by a patient navigator serving as the liaison and referred to a bone health provider, is better th...

[Choosing Immune Suppression in Renal Transplantation by Efficacy and Morbidity \(CISTEM2\)](#)

Research Question(s): Can the evidence-based clinical decision tool for immunosuppression management be optimized by integrating multiple transplant center electronic medical records datasets and d...

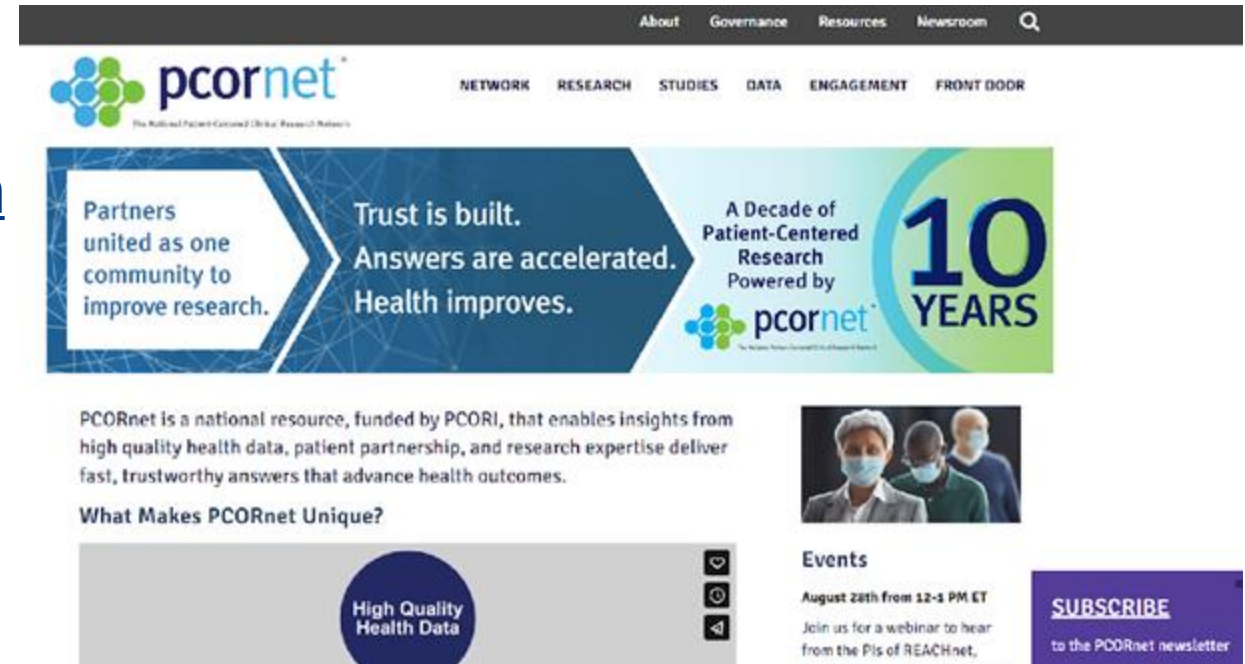
SUBSCRIBE

to the PCORnet newsletter

PCORnet® Awareness and Use



- Videos:
 - [What Makes PCORnet Unique?](#)
 - [Knock on the Front Door to Begin Collaborating with PCORnet](#)
- New “Studies” tab
- PCORnet Newsletter
- PCORnet Workshops at scientific meetings
- **Coming Soon: PCORnet® Playbook**



PCORnet® Maintenance and Innovation: Overview of PCORnet Phase 3 Enhancement Funding



Activity	Category of Board-authorized Enhancement Funding	Associated Funds	Details
Site Expansion	Supporting PCORnet coverage comparable to the US population	\$3.55M	<ul style="list-style-type: none"> All funding was committed in FY23.
Targeted PCORnet® Common Data Model (CDM) Enhancements	<ul style="list-style-type: none"> Enhancements to promote efficiency in CER/PCOR and research partnerships and Enhancing Data Capacity for Patient Reported Outcomes Build capacity to support PCORI's National Priorities for Health 	Up to \$4.25M	<ul style="list-style-type: none"> Responsive to NORC report, IDD/MMM workgroups, Innovation Work Group (IWG) recommendations Focus on four targeted areas: (1) SDOH data; (2) patient-reported medications; (3) data related to IDD and MMM; and (4) patient-reported outcomes/patient-generated health data <i>PMO formalizing process now</i>
Technology Enhancements in Support of Increased Volume of PCORnet® Studies	Enhancements to promote efficiency in CER/PCOR and research partnerships	Up to \$4.5M	<ul style="list-style-type: none"> Responsive to infrastructure mapping findings, IWG recommendations Focus on 1) improving local query run times and 2) demonstrating ability for sites to run multiple queries simultaneously <i>Application Deadline: July 15, 2024</i>
PCORnet® Playbook		Up to \$450K	<ul style="list-style-type: none"> Responsive to infrastructure mapping findings, IWG recommendations Living collection of user guides, toolkits, best practices, and specific considerations for use of the PCORnet for PCORnet® Studies <i>To be managed by the PMO</i>
Digital Toolkit to Facilitate Patient Engagement in PCORnet® Studies	<ul style="list-style-type: none"> Enhancing Data Capacity for Patient Reported Outcomes Enhancements to promote efficiency in CER/PCOR and research partnerships Build capacity to support PCORI's National Priorities for Health 	Up to \$1.3M	<ul style="list-style-type: none"> Responsive to infrastructure mapping findings, IWG recommendations Focus of this presentation

Use PCORnet® for PCORI Priorities: PCORnet Workgroup Reports Outline Research Uses of the Network and Data Capabilities



- Two reports demonstrate a community-engaged approach to accelerate patient-centered CER using PCORnet, including:
 - Identifying critical gaps and needs in knowledge, and prioritizing unanswered CER questions
 - Conducting a PCORnet query to identify populations with specific conditions that are eligible for study participation
 - Identifying questions that can be answered with PCORnet now as well as recommendations for infrastructure enhancements
- Mental and Behavioral Health report underway

December 2023

A Roadmap for Accelerating Research to Prevent Maternal Morbidity and Mortality Using PCORnet®



December 2023

A Roadmap for Accelerating Research in Intellectual and Developmental Disabilities Using PCORnet®



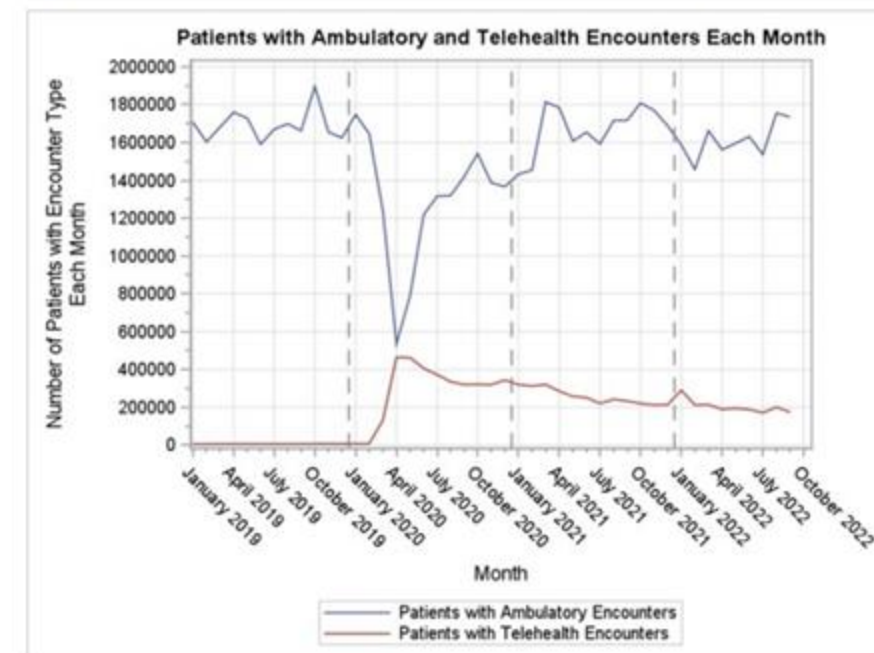
Use PCORnet® for PCORI Priorities: Telehealth Query



- Query supports the following PCORI operational and strategic priorities:
 - Understanding utilization of telehealth to manage one or more chronic conditions in underserved populations,
 - Informing PCORI's continued development of its Telehealth portfolio; and
 - Understanding how PCORnet can be used for PCOR studies on telehealth.
- Telehealth services were utilized by ~9.2 million unique patients across PCORnet® Network Partners over the 3-year period
- Of the more than 20 chronic conditions included in the query, patients with cardiovascular-related health conditions were highest utilizers of telehealth
 - Hypertension (29%), hyperlipidemia (27%), arthritis (17%), diabetes (13%)



Figure 2. Counts of Patients with Ambulatory or Telehealth Encounters by Month (2019-2022).



Evaluating PCORnet®: Maturity Model



Funding Opportunities / What & Who We Fund / PCORnet®, The National Patient-Centered Clinical Research Network

PCORI's Maturity Model for PCORnet®

PCORI's vision is that patients and the public have information they can use to make decisions that reflect their desired health outcomes.

PCORI funds PCORnet, the National Patient-Centered Clinical Research Network, to facilitate definitive studies that are national in scope, with high-quality health data, patient partnership and research expertise that can deliver fast, trustworthy answers that advance health outcomes.

PCORI will use the Maturity Model for PCORnet to support PCORI's Strategies to Leverage PCORnet® to Advance PCORI's National Priorities for Health and Evaluate PCORnet Performance.

- The Maturity Model for PCORnet articulates what the Network overall will look like at each stage of maturity to achieve PCORI's vision for PCORnet.
- PCORI's organizational learning and evaluation agenda and framework will include the key questions to be answered about progress and success for PCORnet at each stage of maturity, and the measurement strategy.

The menu to the right lists the domains through which PCORI expects PCORnet to mature (e.g., Research, Data and Technology, etc.).

Maturity Model Domains

- [Research](#)
- [Data & Tech](#)
- [Governance](#)
- [Operations](#)
- [Engagement](#)
- [Diversity, Equity and Inclusion](#)
- [Partnership & Public Awareness](#)

[Download the Maturity Model](#)

<https://www.pcori.org/funding-opportunities/what-who-we-fund/pcornetr-national-patient-centered-clinical-research-network/pcoris-maturity-model-pcornetr>

2024 Research Award Funding Opportunities



- 1. Up to \$5M
- 2. \$5-12M

Broad Pragmatic Studies (BPS)

Investigator-initiated awards in alignment with the National Priorities for Health
Three funding categories, including PCORnet® Studies

Up to \$750K

Methods

Improve use of AI and ML, improve study design, support data research networks, Ethical and human subject protections in CER

- 1. Up to \$500K
- 2. Up to \$1.5M

Science of Engagement

Two funding categories: Development and validation of measures
Development and testing of engagement techniques

Variable

Topical/Targeted

Stakeholder-driven topics, issues, and questions of national significance
Upcoming topicals: (1) Managing Pain and (2) Promoting Healthy Children and Youth (each up to \$12 million in direct costs)

Up to \$22M
for feasibility
and
full-scale study
phases

Phased Large Awards for Comparative Effectiveness Research (PLACER)

Large, meritorious, and innovative studies with some risks

**Cycle 3 2024 LOI
Deadline for
Standing PCORI
Funding
Announcements
(PFAs): Sept. 4, 2024**

**LOI Deadlines for
Upcoming Topical
PFAs:**

Oct. 1, 2024
(Promoting Healthy
Children and Youth)

Jan. 14, 2025
(Managing Pain)

*All funds and timeline noted above are subject to change

Broad Pragmatic Studies PCORI Funding Announcement: Category 3 for PCORnet® Studies



- **Broad Pragmatic Studies PFA: Category 3 to support PCORnet Studies** that advance PCORI's National Priorities for Health
 - Will repeat each funding cycle
 - Upcoming opportunity: [Cycle 3 2024 BPS PFA](#)
- **Studies must:**
 - Address National Priorities for Health
 - Include 2 or more Clinical Research Networks
 - Share study progress, performance metrics monthly (e.g., days to IRB, number of days to first patient enrolled)
 - Share best practices at least annually with the Network (e.g., PCORnet Steering Committee), as outlined in additional PCORnet Study milestones
 - Use PCORnet resources to improve the efficiency of the patient-centered research conducted (e.g., PCORnet Common Data Model, single IRB, engagement resources)
- ***Up to \$12 million direct costs***
 - Studies requesting direct costs greater than \$5 million will be required to meet additional requirements

Category 3 Requirements

- Applicants to Category 3 must contact the PCORnet® Front Door before preparing their applications.
- In the full application, applicants must submit Letters of Support from at least two CRN sites that have agreed to participate.
- Category 3 PCORnet Studies will include additional milestones that specify:
 - Share study progress and best practices regularly with the network, such as through annual presentations to the PCORnet Steering Committee,
 - Report performance on study site metrics (e.g., time to IRB, enrollment rates) monthly to the Coordinating Center for PCORnet to promote continuous learning and improvement.

Cycle 3 2024 BPS PFA Dates

September 4, 2024

Funding Announcement Opens

October 1, 2024; 5:00 pm ET

Letter of Intent Deadline

October 29, 2024

Letter of Intent Status Notification

January 14, 2025; 5:00 pm ET

Application Deadline

Questions?

cgrossmann@pcori.org

jparis@pcori.org